

CLASS A SUBLEASE
11650 JOHNS CREEK PARKWAY
JOHNS CREEK, GA 30098



UP TO 132,688 SF AVAILABLE IMMEDIATELY

11650 JOHNS CREEK PARKWAY IS A 132,688 SF CLASS A OFFICE BUILDING, LOCATED IN TECHNOLOGY PARK/JOHNS CREEK.

FOR INFORMATION, PLEASE CONTACT:

WARD GREEN
GREEN COMMERCIAL PROPERTIES, INC.
770-998-2228 (O)
404-290-1002 (C)
WARD@GREENCO.NET



SPECIFICATIONS

132,688 SF FREESTANDING BUILDING

SPACE CAN BE SUBDIVIDED

AVAILABLE IMMEDIATELY

629 PARKING SPACES ON 10 ACRE SITE

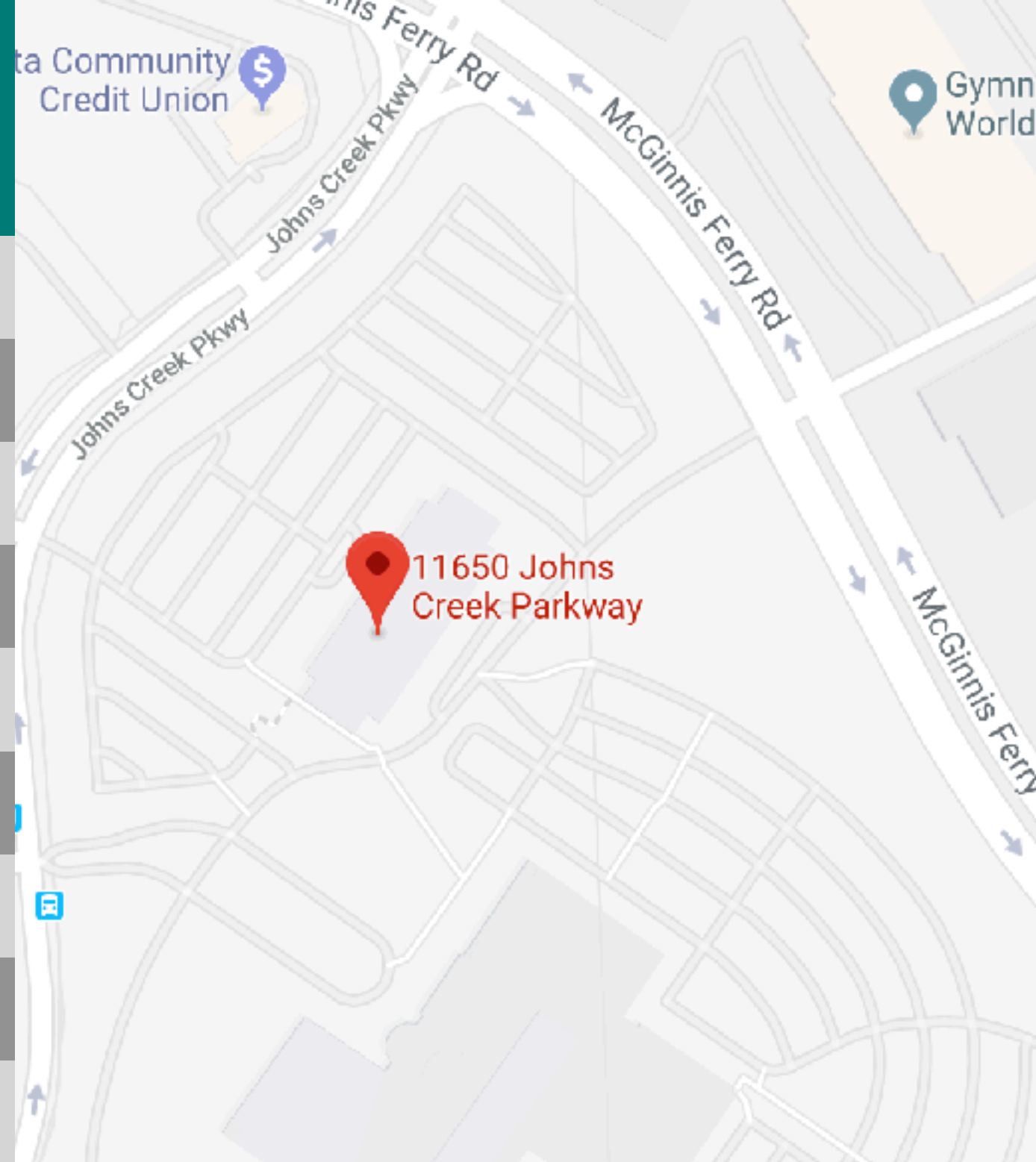
SUBLEASE TERM THROUGH 10/31/23

CLOSE TO RETAIL AMENITIES

FURNITURE AVAILABLE

LARGE OPEN FLOOR PLANS

CLOSE PROXIMITY TO GRTA XPRESS
ROUTE 408 STOP TO CHAMBLEE MARTA

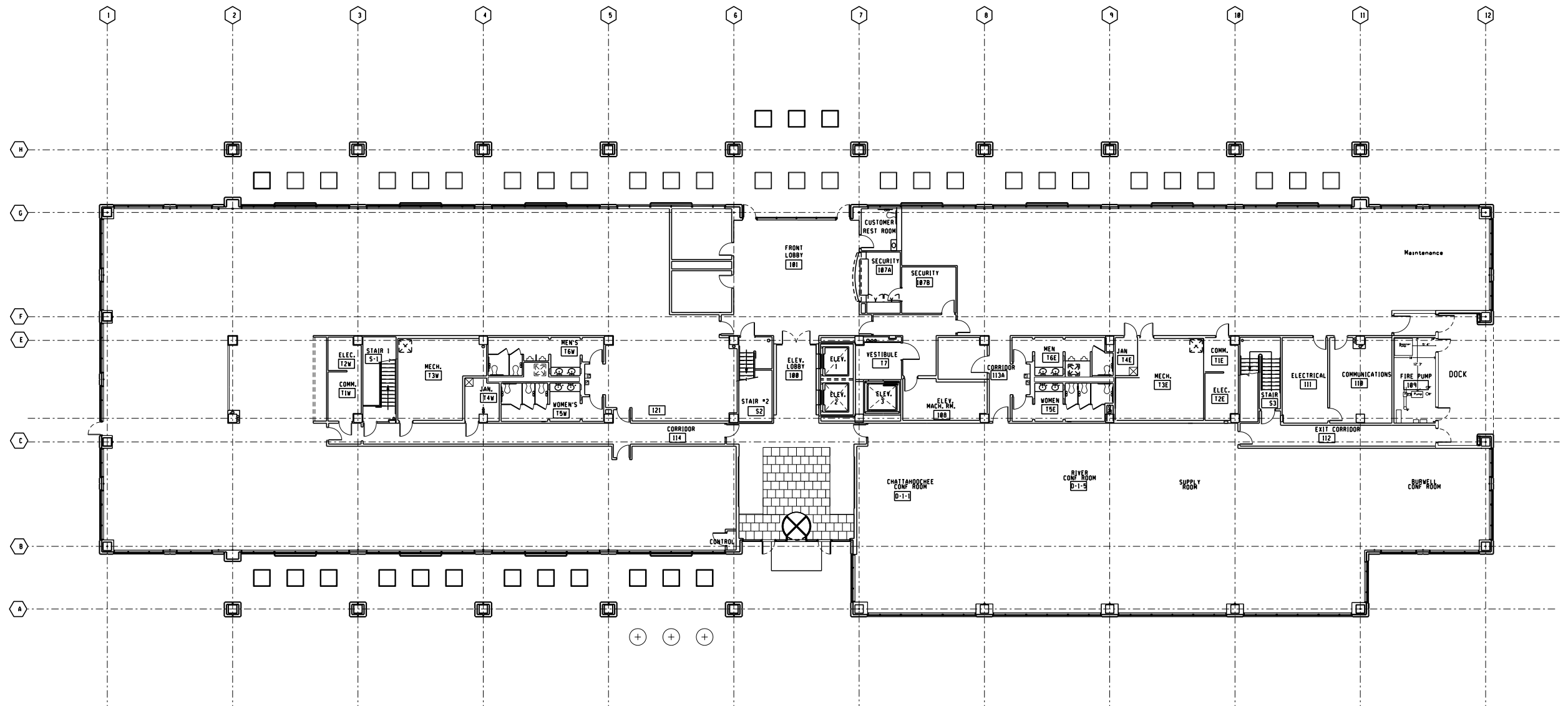


FOR INFORMATION, PLEASE CONTACT:

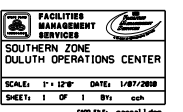
WARD GREEN
GREEN COMMERCIAL PROPERTIES, INC.
770-998-2228 (O)
404-290-1002 (C)
WARD@GREENCO.NET



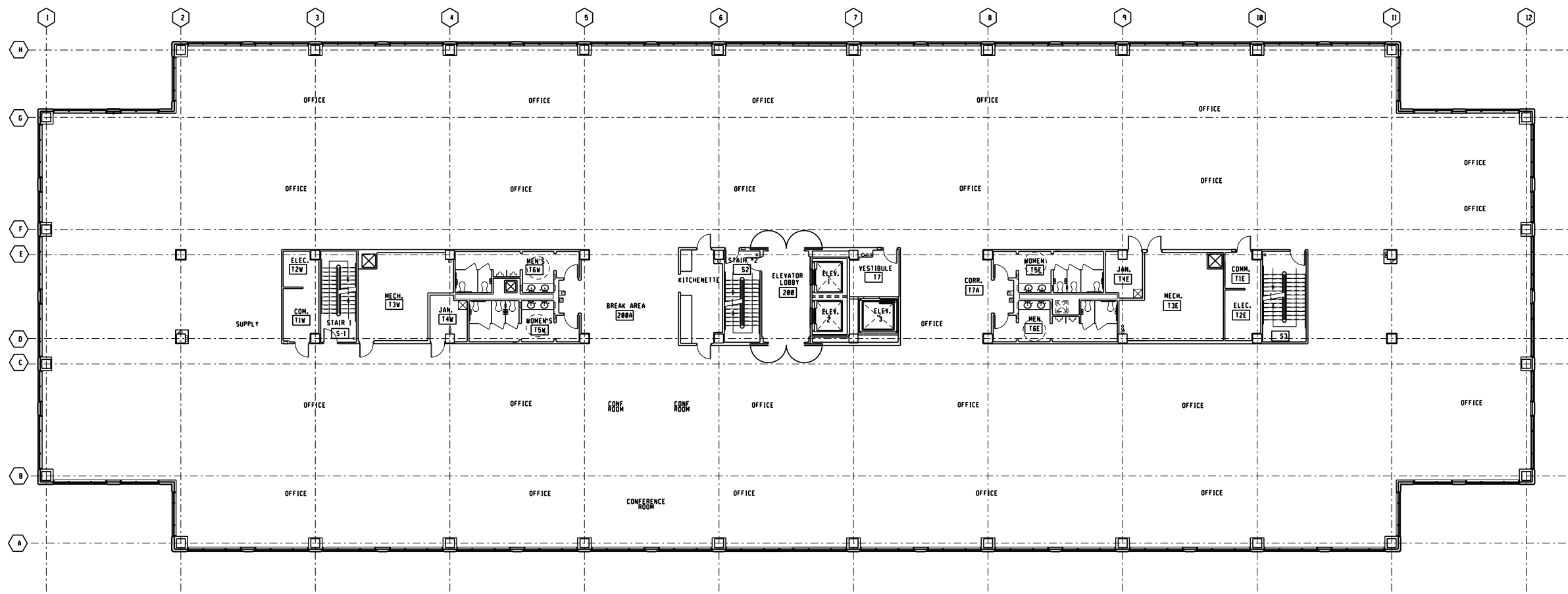
1ST FLOOR




DULUTH OPERATIONS CENTER 1ST FLOOR

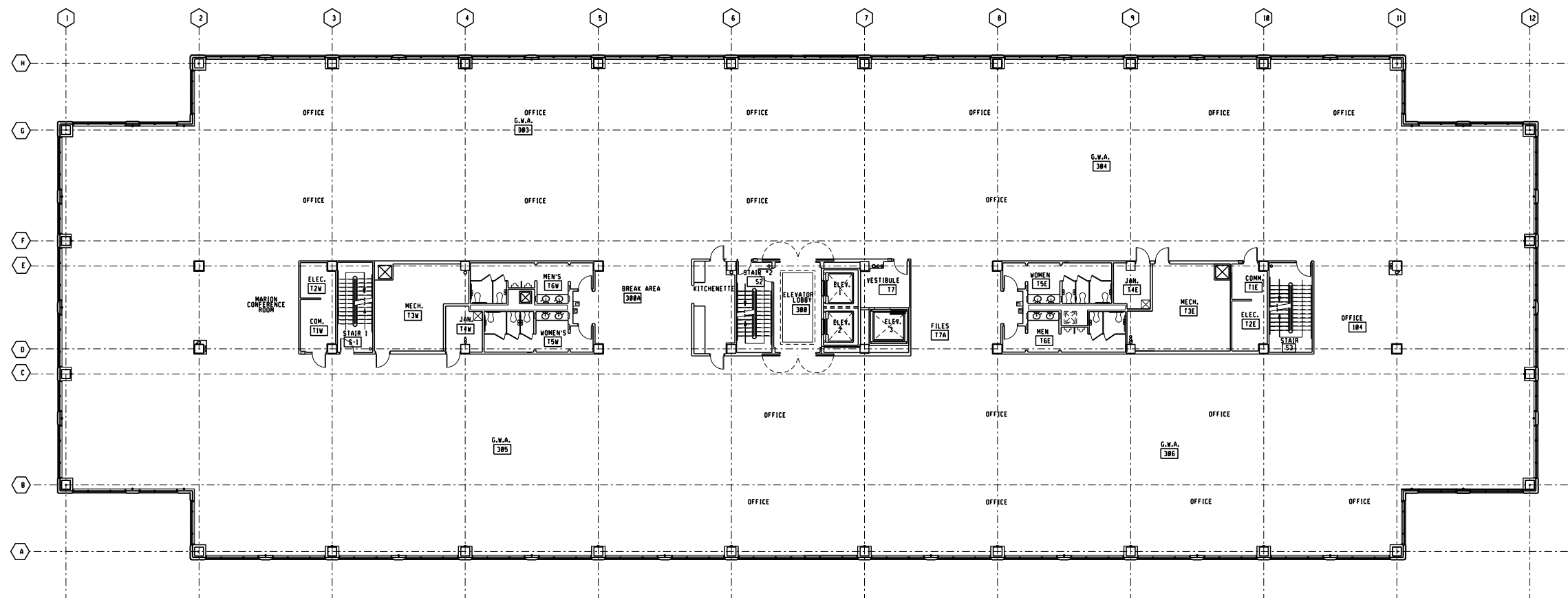


2ND FLOOR

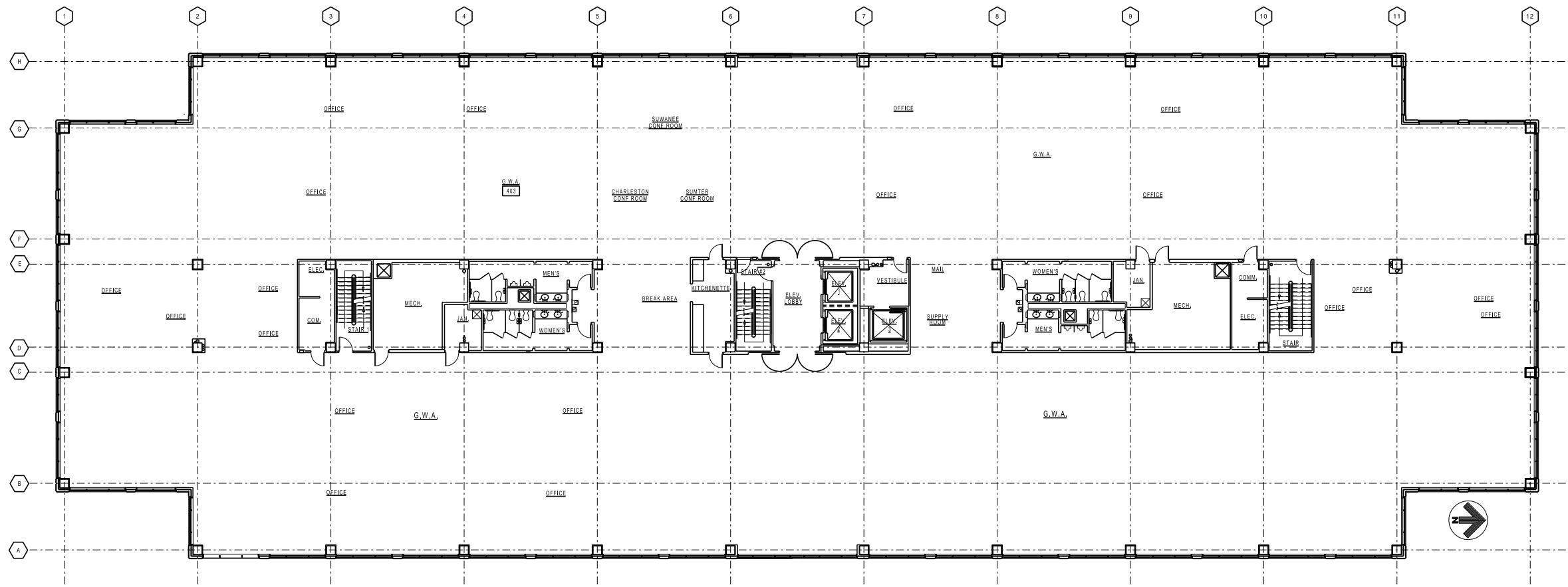




 FACILITIES MANAGEMENT SERVICES	
DULUTH OC 2ND FLOOR PLAN	
SCALE: 1/8" = 1'-0"	DATE:
SHEET: 1 OF 1	BY:
CADD FILE: paco2.dgn	

3RD FLOOR



4TH FLOOR



 FACILITIES MANAGEMENT SERVICES 	
DULUTH O.C. 4th FLOOR ARCH PLAN	
SCALE: 1/8" = 1'-0"	DATE: 08-14-2014
SHEET: 1 OF 1	BY: [Signature]
<small>CADD FILE: paoce4.dgn</small>	