

FOR LEASE CENTRAL PERIMETER OFFICE BUILDING

6255 BARFIELD ROAD SANDY SPRINGS, GA



BUILDING SPECIFICATIONS

- UP TO 9,398 SQUARE FEET AVAILABLE ON SECOND FLOOR
- CLOSE PROXIMITY TO SANDY SPRINGS MARTA RAIL
- EASY ACCESS TO GA-400 AND I-285
- 4/1,000 PARKING
- BELOW MARKET RENTAL RATE

FOR MORE INFORMATION CONTACT:

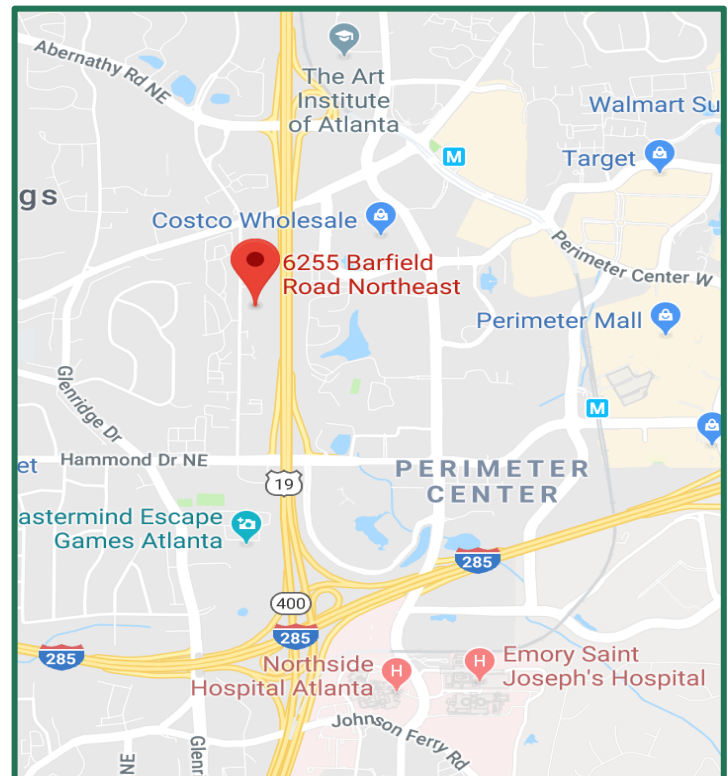
WARD GREEN

GREEN COMMERCIAL PROPERTIES, INC.

770-998-2228 (O)

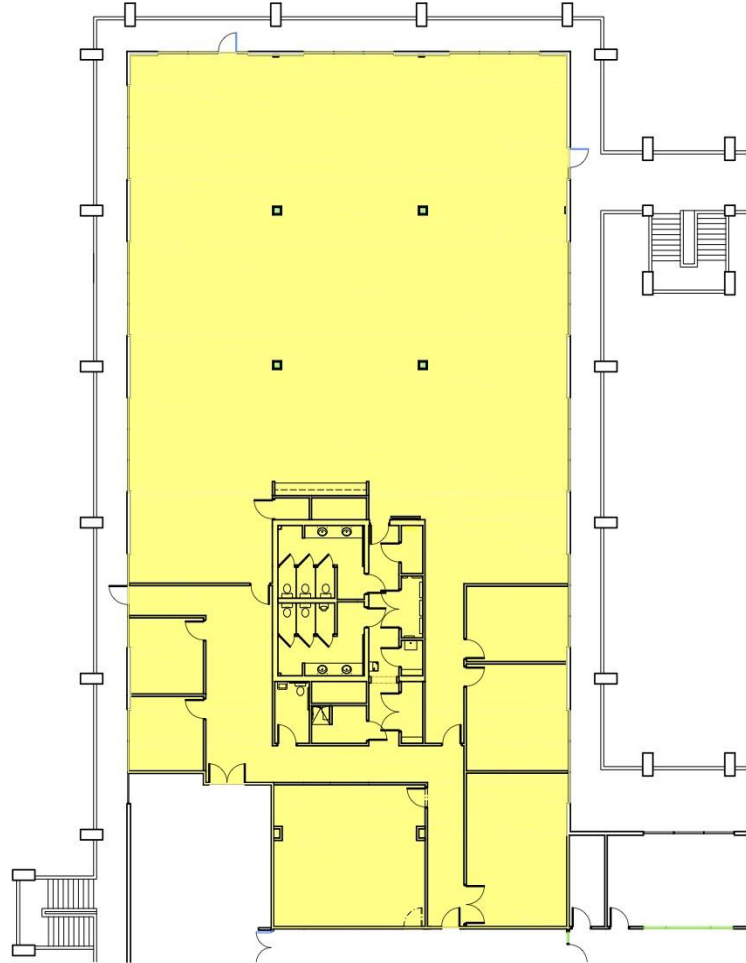
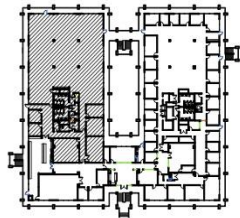
404-290-1002 (C)

WARD@GREENCO.NET



6255 BARFIELD RD SANDY SPRINGS, GA

KEY PLAN



3-12-18

6255 Barfield Rd

Second Floor - 9,398 USF



INTERIOR SPACE



INTERIOR SPACE

